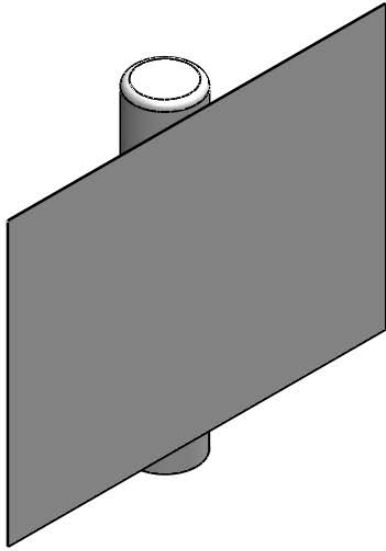
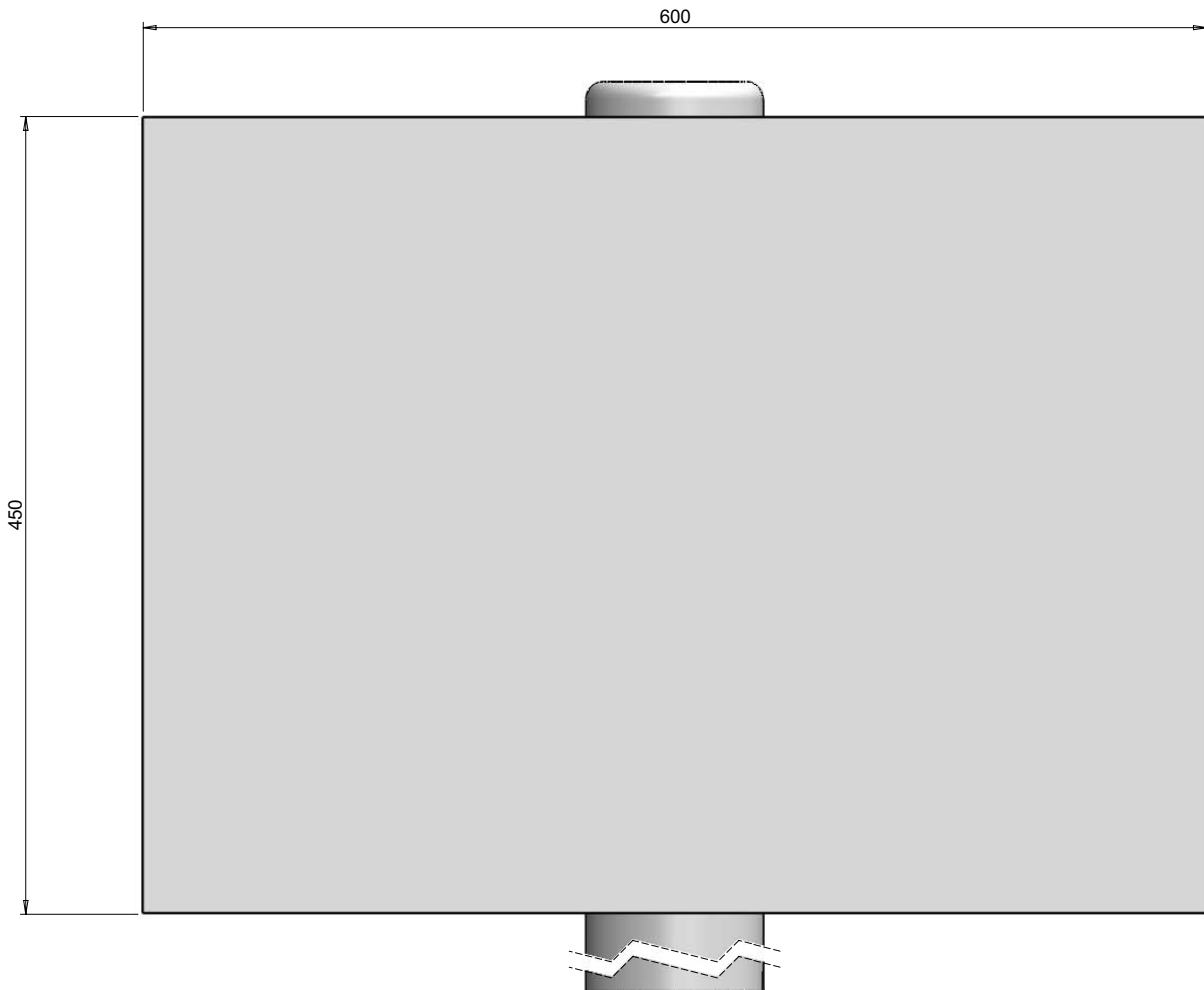


PART No: TWS-01



Thorworld offer an extensive range of Loading and Unloading specific signs. Available in 1mm thick ridged (RPVC), self adhesive vinyl (SAV) for signs inside the loading bay and 2mm thick Polycarbonate (PC), excellent for outdoor use. Uniclamps and free standing posts are also available for use with all signs except self adhesive vinyl. (See Optional Extras)

MATERIAL	AVAILABLE AS: RPVC
ESTIMATED LEADTIME	5-10 WORKING DAYS
OPTIONAL EXTRAS	TWS-UNI UNICLAMPS TWS-PO POST WITH END CAP & CAP BASE PLATE



PLEASE NOTE: SIGN IS SHOWN WITH POST, WHICH IS SOLD SEPERATELY. (SEE OPTIONAL EXTRAS)

All dimensions shown are in millimetres and are intended for reference purposes only; exact product measurements may vary due to applied tolerances and methods of manufacture

