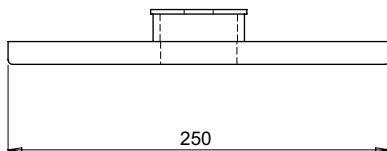
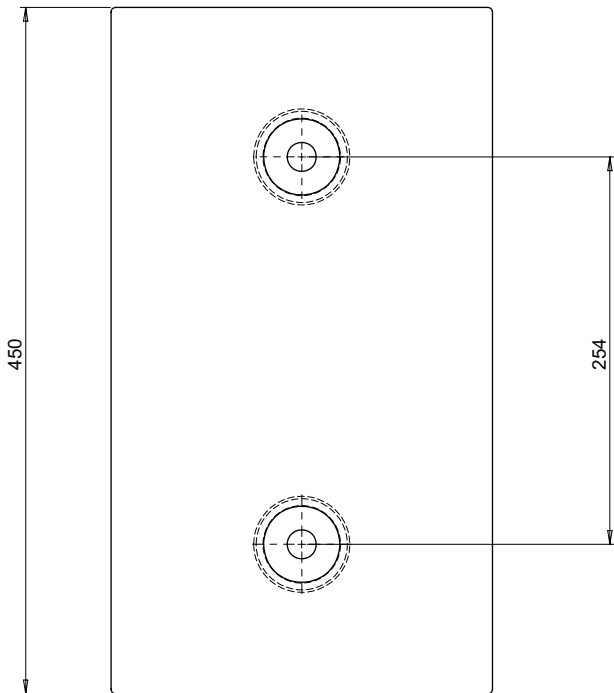


TWB-1018P

This Steel Dock Bumper Protector is available for fitting onto the front of the dock bumper to provide a hard wearing surface for high impact situations. Impact protection and cushioning is still however provided by the dock bumper itself.

MATERIAL	STEEL
WEIGHT	9 Kg
ESTIMATED LEADTIME	5 - 10 Working Days
ADDITIONAL INFO	Many other sizes are available to suit our full bumper range, along with specials on request.



To Suit Bumper	Dimension 'T'
TWB-1018-2	18
TWB-1018-4	44
TWB-1018-6	95

All dimensions shown are in millimetres and are intended for reference purposes only; exact product measurements may vary due to applied tolerances and methods of manufacture

